



**Bellever Close  
Princetown  
Yelverton  
Devon  
PL20 6RT**

**Offers In Excess Of £217,000**

**bettermove**

# Bellevue Close Yelverton

Bettermove are proud to present this 3 bedroom semi-detached house in Princetown, welcoming cash buyers only.

The property benefits from double glazing, electric heating and new windows throughout, with off road parking available.

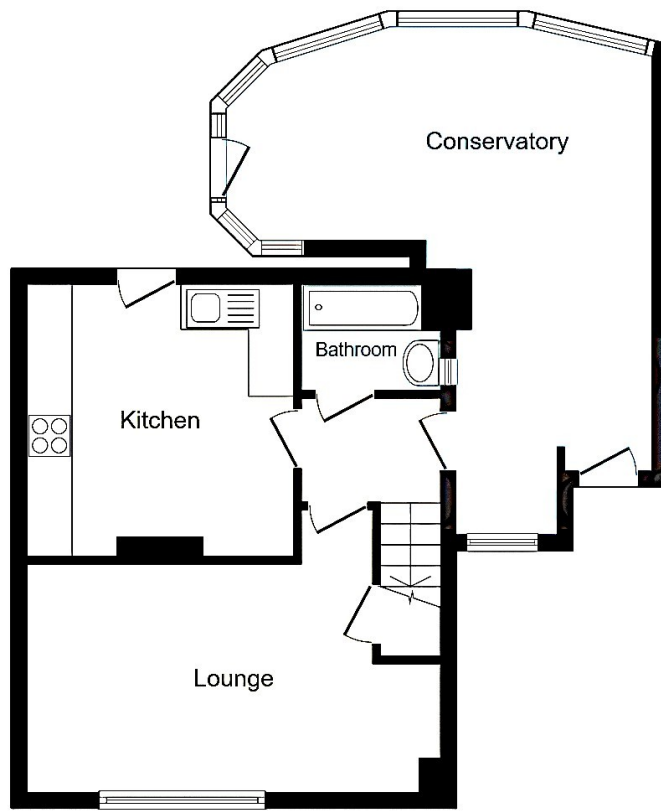
The council tax band is A.

The interior of this beautifully presented property comprises a spacious living room, kitchen/diner, family bathroom and conservatory on the ground floor. The first floor consists of three bedrooms and a WC. The exterior boasts a private rear garden, with both patio and lawn, giving excellent views and perfect for enjoying the summer months.

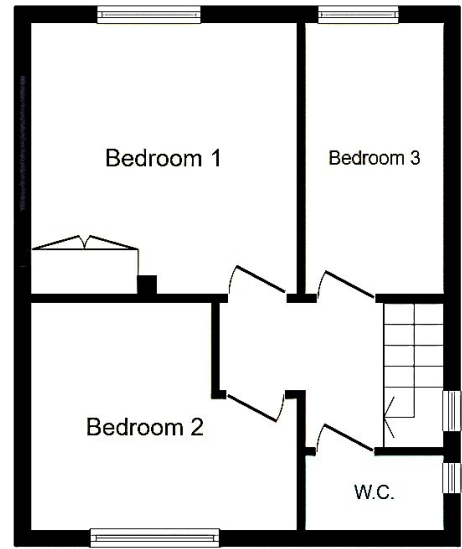
Located in the popular village of Princetown, located within Dartmoor national Park. The property is close to a range of amenities including shops, supermarkets, restaurants and pubs. Transport links can be found from Gunnislake Railway Station and a variety of local bus routes.

This exciting opportunity should not be missed! All enquiries can be made through Bettermove on 0330 004 0050.





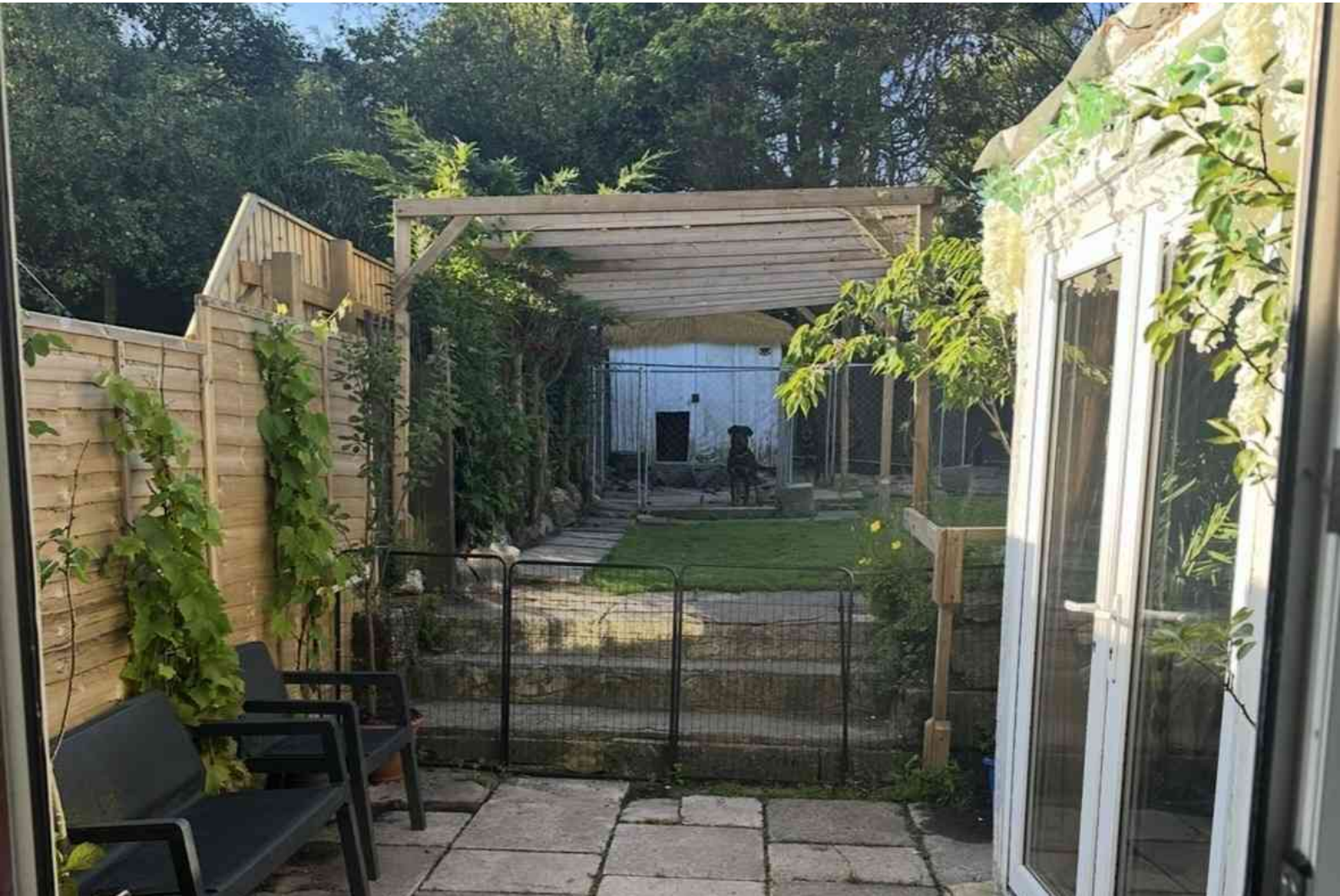
**Ground Floor**



**First Floor**

Total floor area 98.7 sq.m. (1,063 sq.ft.) approx





20-22 Bridge End, Leeds, LS1 4DJ  
t: 0330 004 0050 e: [hello@bettermove.co.uk](mailto:hello@bettermove.co.uk)  
[www.bettermove.co.uk](http://www.bettermove.co.uk)