



Western Road  
Burnham-on-Crouch  
Essex  
CM0 8JE

Offers in Excess of £268,000

bettermove

# Western Road

## Burnham-on-Crouch

Bettermove are proud to present this 3 bedroom terrace house in Burnham-on-Crouch, available with no forward chain.

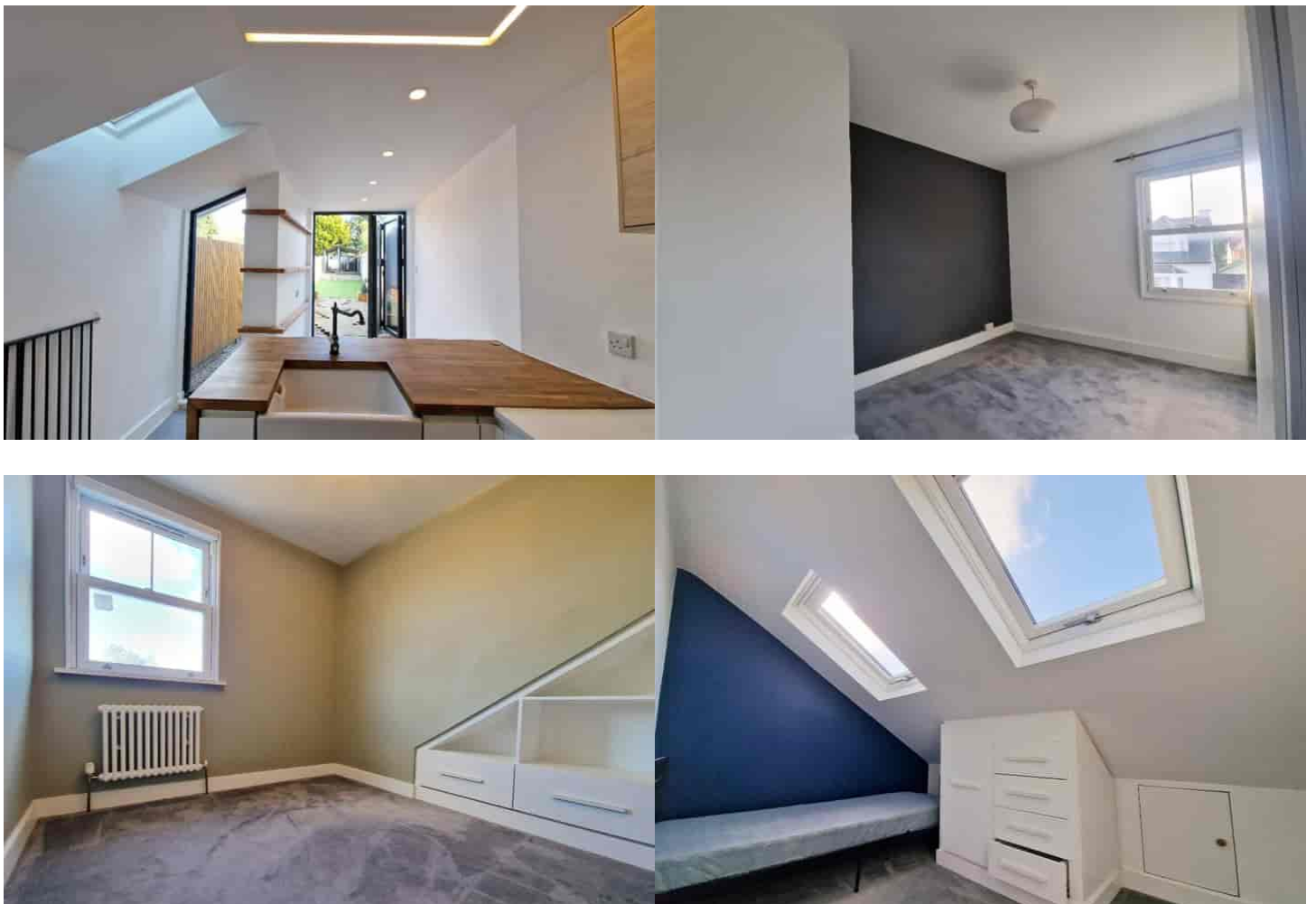
The property benefits from double glazing, gas central heating throughout and has on street parking available.

The council tax band is B.

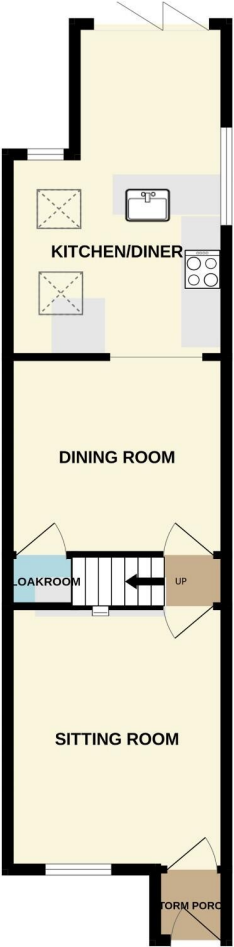
The interior of this beautifully presented property comprises a spacious living room, dining room and fitted kitchen on the ground floor. The first floor consists of one double bedroom and the family bathroom, with two further bedrooms located on the second floor. The exterior boasts a private rear garden, with both patio and artificial lawn, perfect for enjoying the summer months.

Located in the popular town of Burnham-on-Crouch, the property is close to a range of amenities, including shops, supermarkets, pubs and restaurants. Excellent transport links can be found from Burnham-on-Crouch Railway Station and a variety of local bus routes.

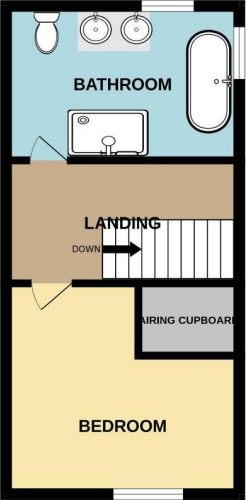
This exciting opportunity should not be missed! All enquiries can be made through Bettermove on 0330 004 0050.



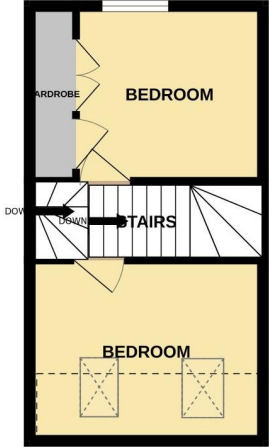
GROUND FLOOR



1ST FLOOR



2ND FLOOR







20-22 Bridge End, Leeds, LS1 4DJ  
t: 0330 004 0050 e: [hello@bettermove.co.uk](mailto:hello@bettermove.co.uk)  
[www.bettermove.co.uk](http://www.bettermove.co.uk)