



Globe Street
Methwold
Thetford
Norfolk
IP26 4PQ

Offers in Excess of £198,000

bettermove

Globe Street Thetford

Bettermove are proud to present this 2 bedroom terraced house in Methwold, available with no forward chain.

The property benefits from double glazing, gas central heating throughout and has on street parking available.

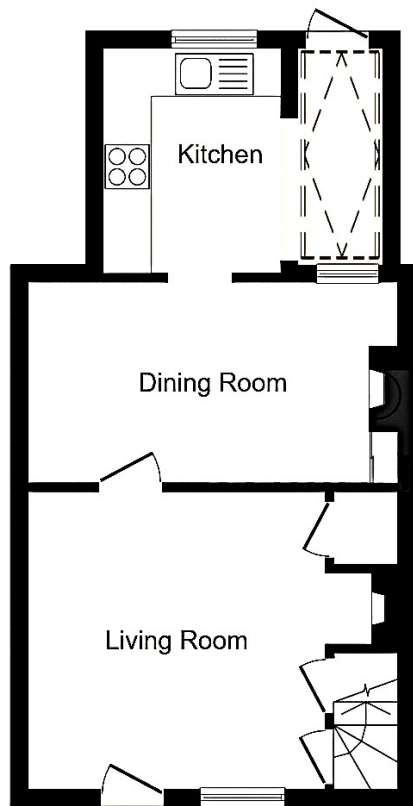
The council tax band is B.

The interior of this beautifully presented property comprises a spacious living room, dining room and fitted kitchen on the ground floor. The first floor consists of 2 bedrooms and the family bathroom. The exterior boasts a private rear courtyard, with an outbuilding, through the outbuilding, there is a second garden area, mainly laid to lawn, perfect for enjoying the summer months.

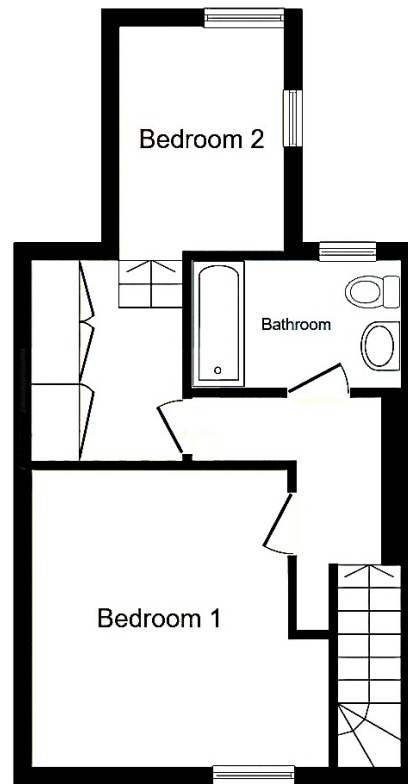
Located in the popular town of Methwold, Thetford, the property is close to a range of amenities, including shops, supermarkets, restaurants and pubs. Excellent transport connections can be found from Brandon and Lakenheath railway stations, giving links to Cambridge, Norwich and London, a range of local bus routes, and close access to the A134.

This exciting opportunity should not be missed! All enquiries can be made through Bettermove on 0330 004 0050.



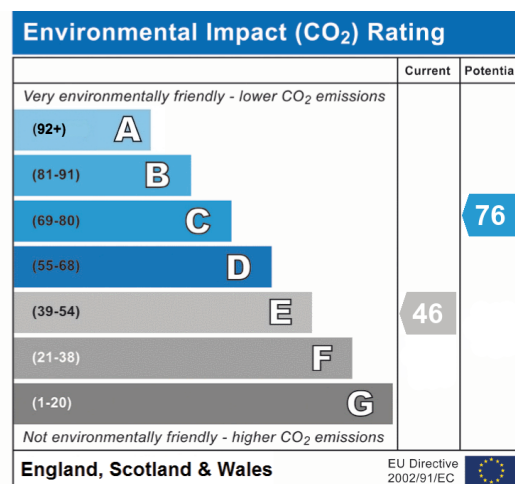
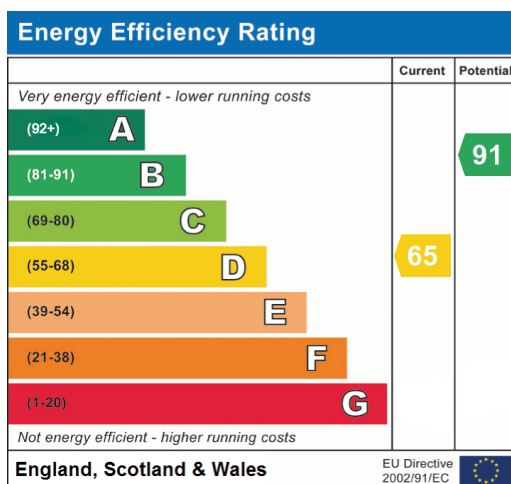


Ground Floor



First Floor

This floor plan is for illustrative purposes only. It is not drawn to scale. Any measurements, floor areas (including any total floor area), openings and orientation are approximate. No details are guaranteed, they cannot be relied upon for any purpose and they do not form part of any agreement. No liability is taken for any error, omission or misstatement. A party must rely upon its own inspection(s). Powered by www.focalagent.com





20-22 Bridge End, Leeds, LS1 4DJ
t: 0330 004 0050 e: hello@bettermove.co.uk
www.bettermove.co.uk