



New Durham Road  
Stanley  
Durham  
DH9 7UQ

Offers in Excess of £208,000

bettermove

# New Durham Road Stanley

Bettermove are proud to present this 6 bedroom terraced house in Annfield Plain.

The property benefits from double glazing, gas central heating throughout and has off street parking available.

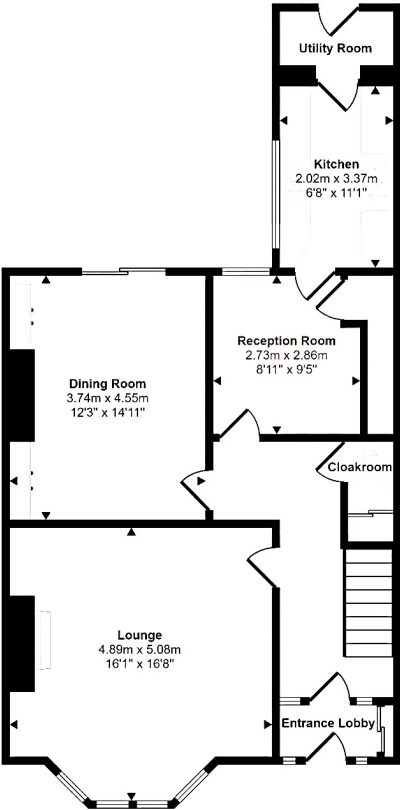
The council tax band is C.

The interior of this beautifully presented property comprises a spacious living room, dining room, fitted kitchen, study, utility room and WC on the ground floor. The first floor consists of four bedrooms, all with en-suites, the further 2 bedrooms, both with en-suits, are located on the second floor. The exterior boasts a private rear yard, perfect for enjoying the summer months.

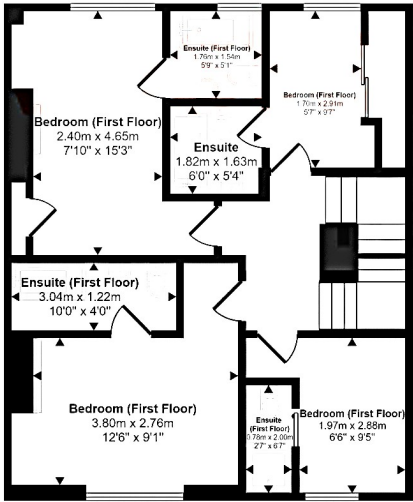
Located in the popular town of Annfield Plain, Stanley, the property is close to a range of amenities, including shops, supermarkets, restaurants and pubs. Excellent transport connections can be found from Chester-le-Street Railway Station, local bus routes and close access to the A693, leading to the A1(M).

This exciting opportunity should not be missed! All enquiries can be made through Bettermove on 0330 004 0050.

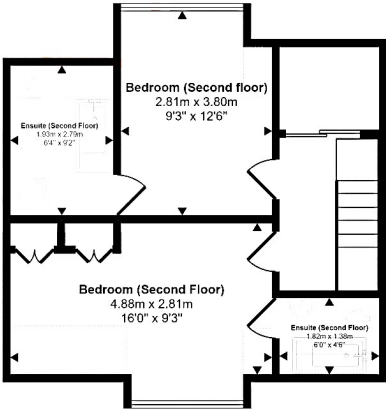




Ground Floor  
Approx 77 sq m / 831 sq ft



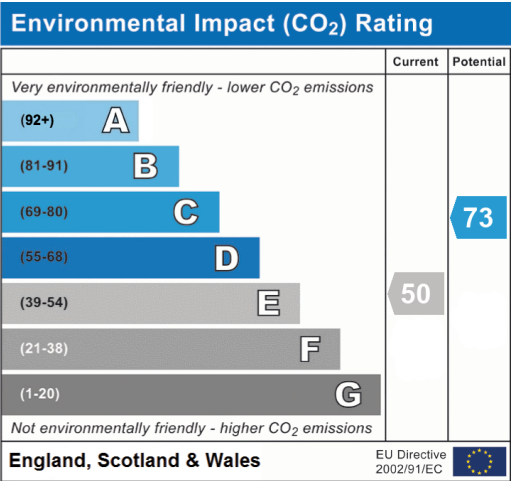
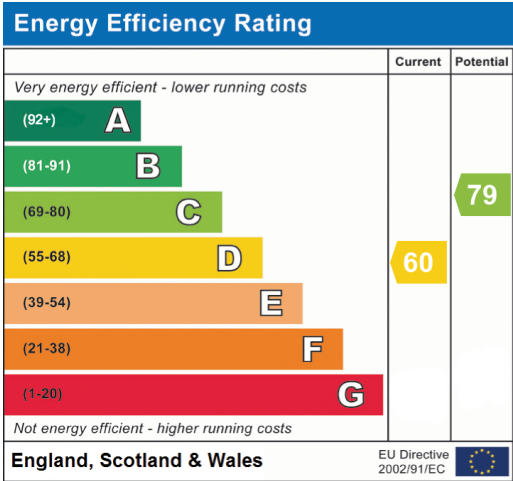
First Floor  
Approx 66 sq m / 711 sq ft



Second Floor  
Approx 44 sq m / 469 sq ft

Denotes head height below 1.5m

This floorplan is only for illustrative purposes and is not to scale. Measurements of rooms, doors, windows, and any items are approximate and no responsibility is taken for any error, omission or mis-statement. Icons of items such as bathroom suites are representations only and may not look like the real items. Made with Made Snappy 360.







20-22 Bridge End, Leeds, LS1 4DJ  
t: 0330 004 0050 e: [hello@bettermove.co.uk](mailto:hello@bettermove.co.uk)  
[www.bettermove.co.uk](http://www.bettermove.co.uk)