



**Stephenson House
Wetherburn Court
Bletchley
Milton Keynes
Buckinghamshire
MK2 2AF**

Offers in Excess of £142,000

bettermove

Wetherburn Court

Milton Keynes

Bettermove are proud to present this 2 bedroom flat in Bletchley, available with no forward chain.

The property benefits from double glazing, gas central heating throughout.

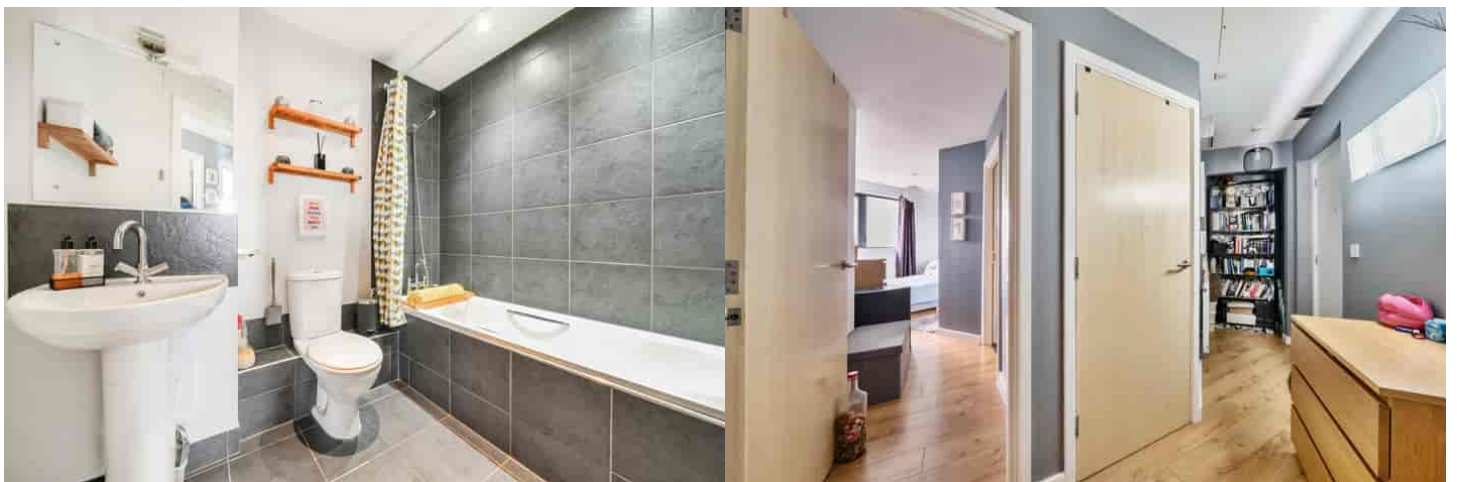
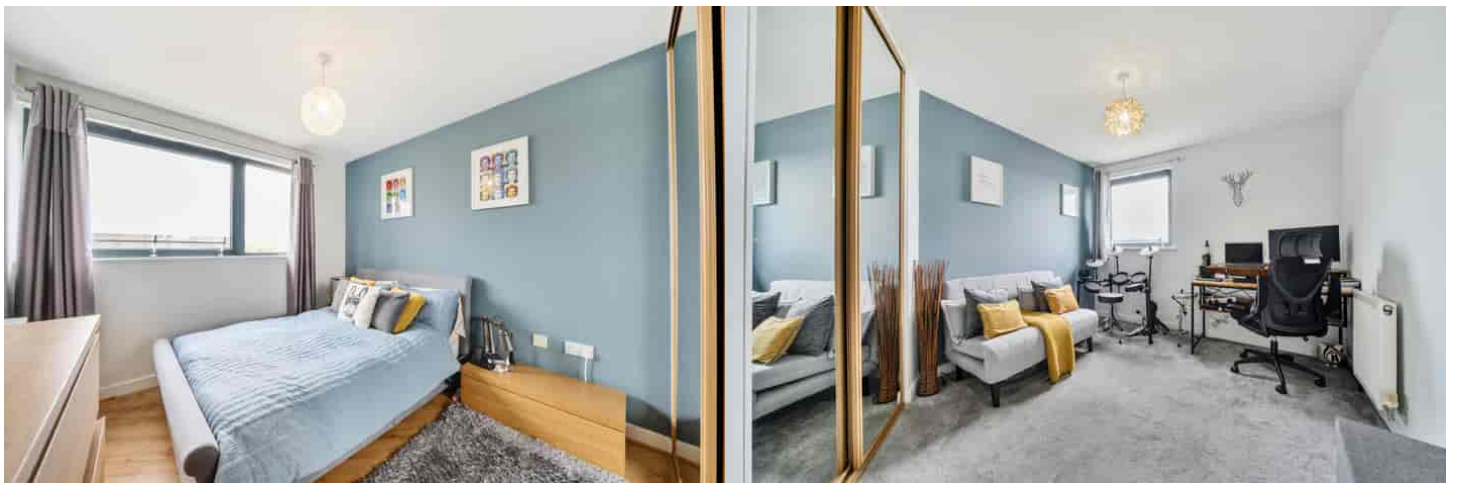
The council tax band is B.

This is a leasehold property of 125 years, starting in December 2008; the service charge is £212.70 per month.

The interior of this beautifully presented property, located on the second floor, comprises a spacious reception/kitchen area, two double bedrooms, with an en-suite connected to the master bedroom, and a family bathroom.

Located in the popular town of Bletchley, Milton Keynes, the property is close to a range of amenities, including shops, supermarkets, restaurants and pubs. Excellent transport connections can be found from Bletchley Railway Station, a variety of local bus routes, and quick access to the A5.

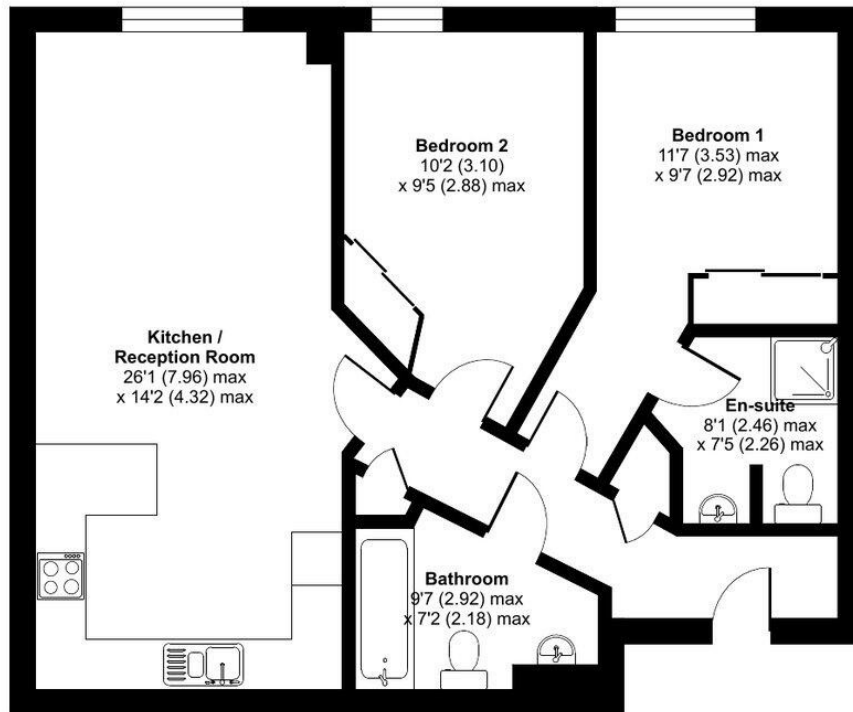
This exciting opportunity should not be missed! All enquiries can be made through Bettermove on 0330 004 0050.



Wetherburn Court, Bletchley, Milton Keynes, MK2

Approximate Area = 796 sq ft / 74 sq m

For identification only - Not to scale



Energy Efficiency Rating		
	Current	Potential
Very energy efficient - lower running costs		
(92+) A		
(81-91) B	85	85
(69-80) C		
(55-68) D		
(39-54) E		
(21-38) F		
(1-20) G		
Not energy efficient - higher running costs		
England, Scotland & Wales		
	EU Directive 2002/91/EC	

Environmental Impact (CO ₂) Rating		
	Current	Potential
Very environmentally friendly - lower CO ₂ emissions		
(92+) A		
(81-91) B	88	88
(69-80) C		
(55-68) D		
(39-54) E		
(21-38) F		
(1-20) G		
Not environmentally friendly - higher CO ₂ emissions		
England, Scotland & Wales		
	EU Directive 2002/91/EC	



20-22 Bridge End, Leeds, LS1 4DJ
t: 0330 004 0050 e: hello@bettermove.co.uk
www.bettermove.co.uk