



Linden Square
Harefield
Uxbridge
Greater London
UB9 6TQ

Offers In Excess Of £500,000

bettermove 

Linden Square Uxbridge

Bettermove are proud to present this 2 bedroom terraced house in Harefield.

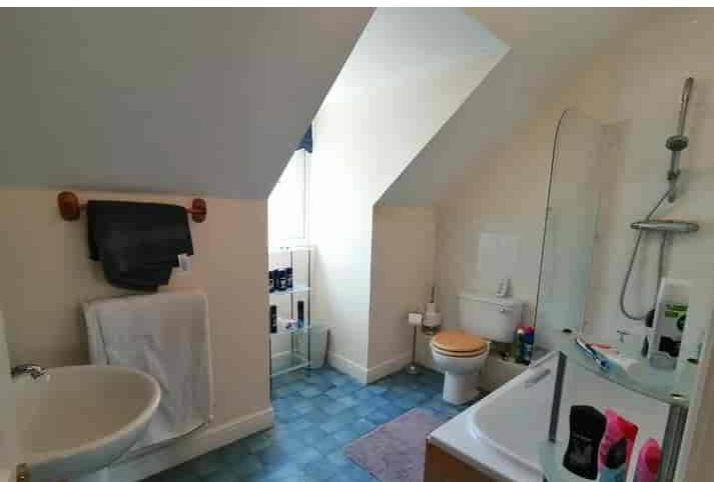
The property benefits from double glazing, gas central heating throughout and has off street parking available.

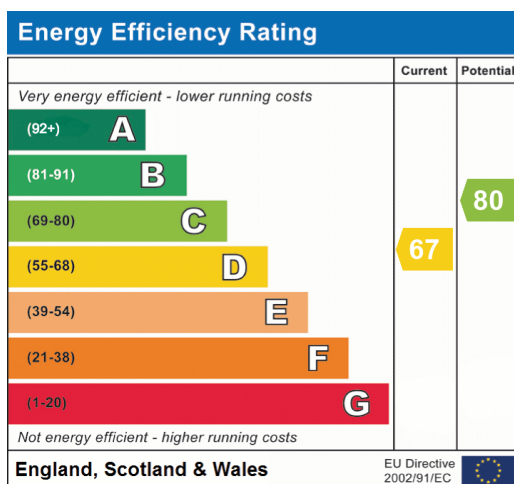
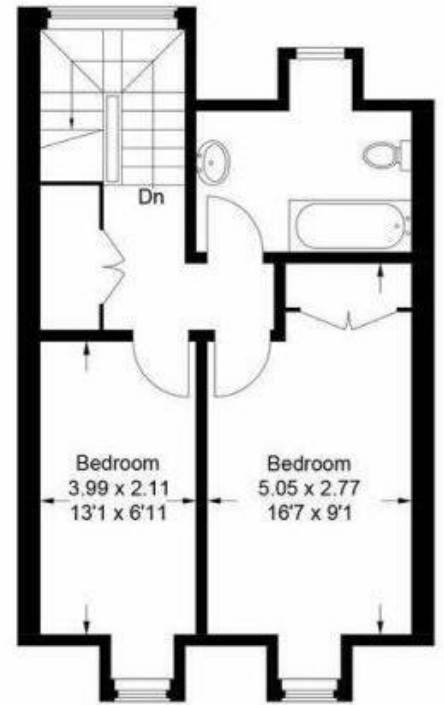
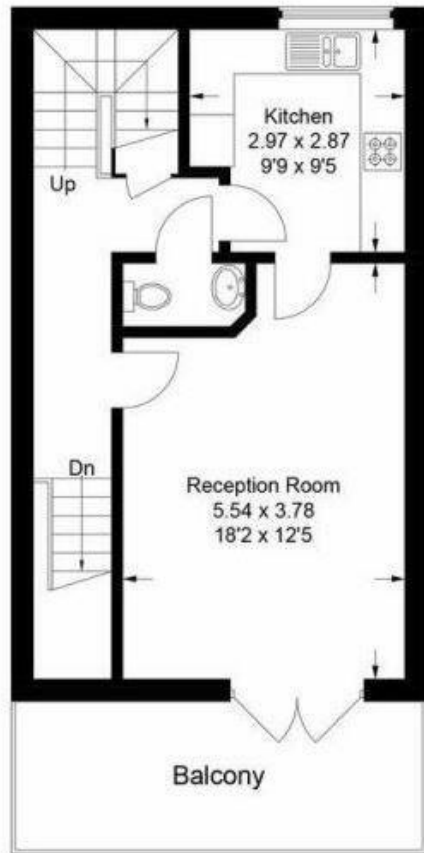
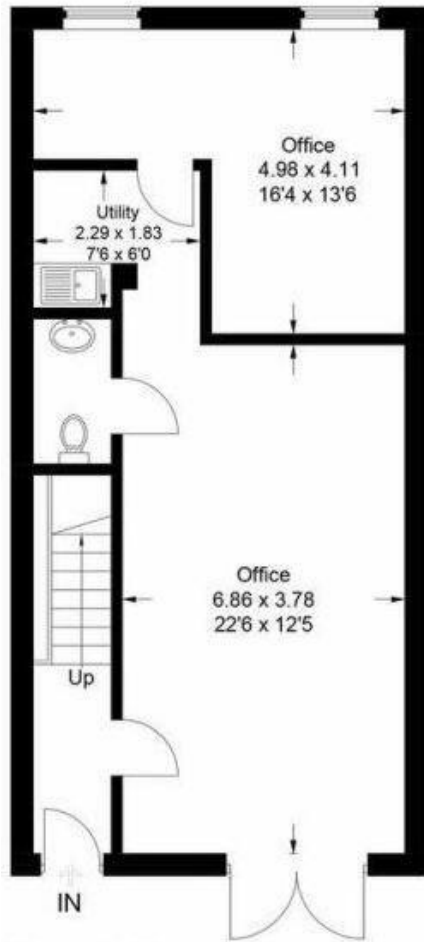
The council tax band is D.

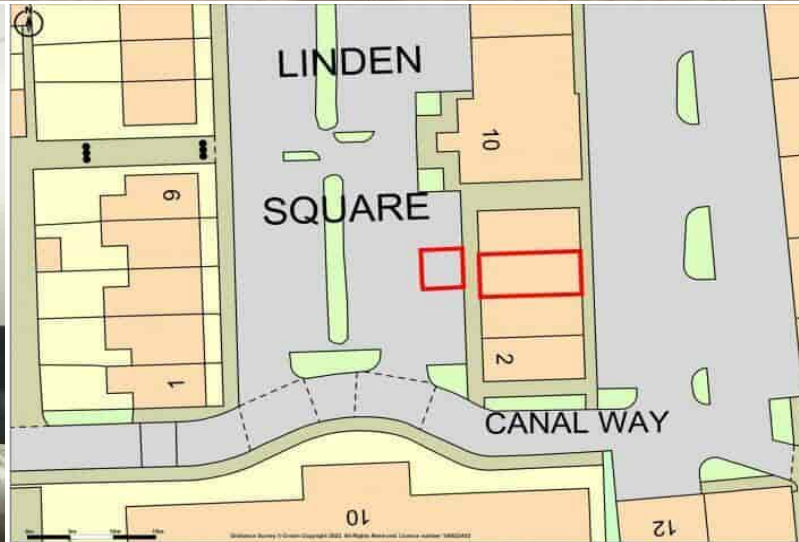
The interior of this beautifully presented property comprises a large office space, with utility and WC on the ground floor. The first floor consists of a reception room, kitchen and WC, with the two bedrooms and the family bathroom situated on the second floor. The exterior boasts a private balcony, perfect for enjoying the summer months.

Located in the popular town of Harefield, Uxbridge, the property is close to a range of amenities, including shops, supermarkets, restaurants and pubs. Excellent transport connections can be found from Rickmansworth Railway Station, a range of local bus routes and quick access to the M25.

This exciting opportunity should not be missed! All enquiries can be made through Bettermove on 0330 004 0050.







20-22 Bridge End, Leeds, LS1 4DJ
t: 0330 004 0050 e: hello@bettermove.co.uk
www.bettermove.co.uk