



**Blackmoor Gate
Furzton
Milton Keynes
Buckinghamshire
MK4 1DD**

Offers in Excess of £235,000

bettermove

Blackmoor Gate

Milton Keynes

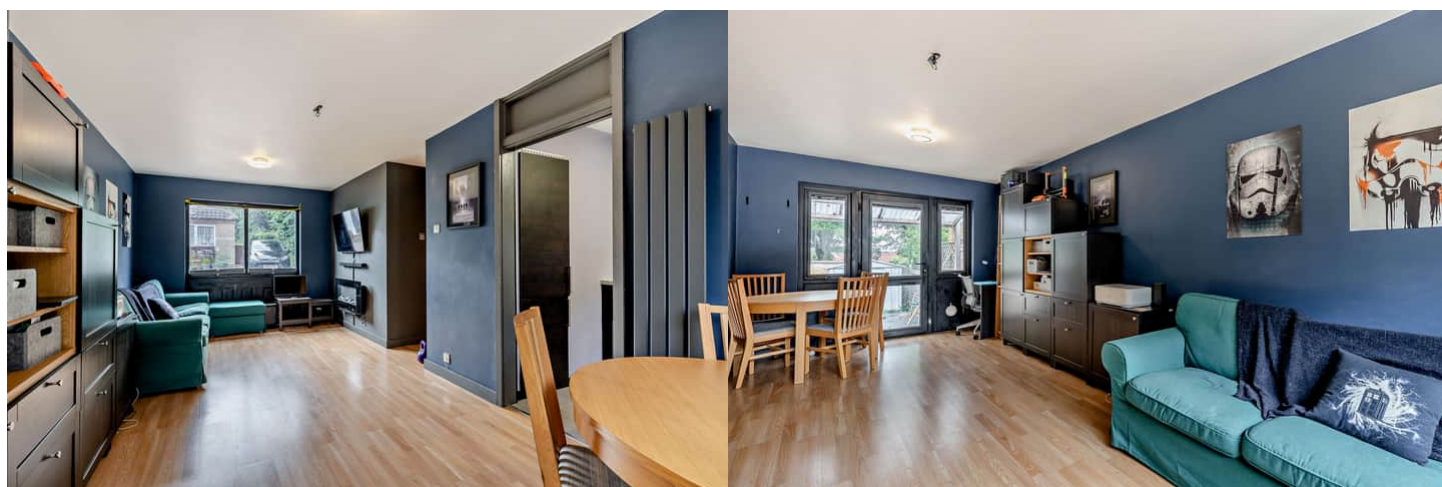
Bettermove are proud to present this 2 bedroom Semi-detached Bungalow in Furzton, available with no forward chain.

The property benefits from double glazing, a combi boiler, gas central heating throughout and has off street parking available via the driveway. The council tax band is B.

The interior of this beautifully presented property comprises a spacious fitted kitchen, dining/living area, with two bedrooms and family bathroom. The exterior boasts a private rear garden, perfect for enjoying the summer months.

Located in the popular area of Furzton, situated to the West of Milton Keynes, the property is close to a range of amenities, including shops, supermarkets, restaurants and pubs, in Milton Keynes Central. Excellent transport connections can be found from Bletchley and Milton Keynes Central Train Station, with a variety of local bus routes and quick access to the A5 and M1.

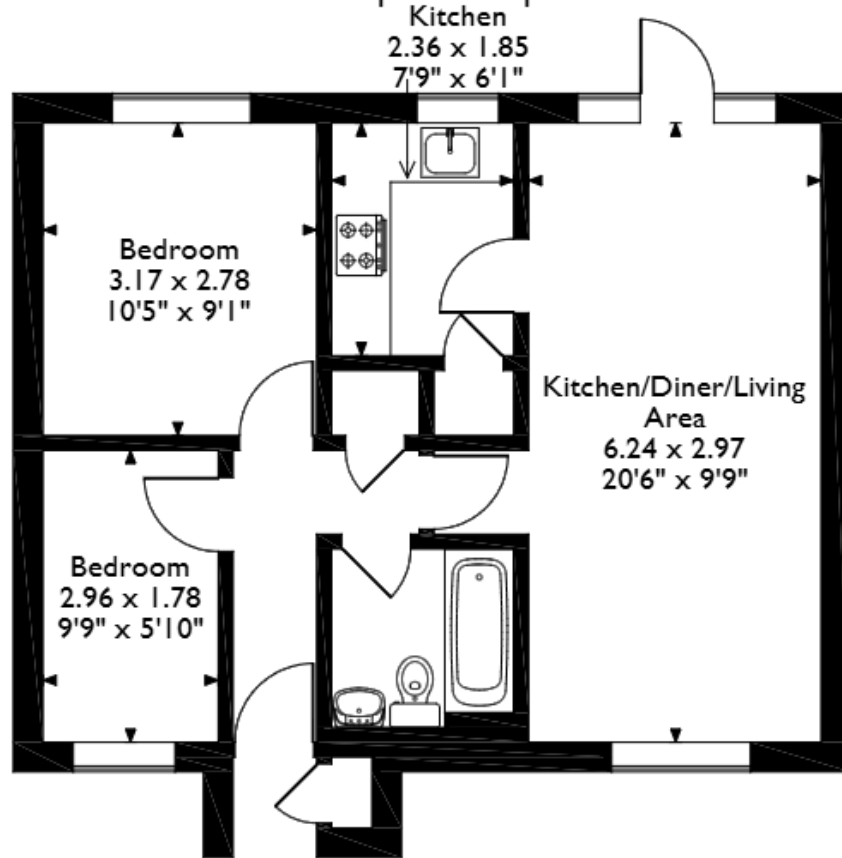
This exciting opportunity should not be missed! All enquiries can be made through Bettermove on 0330 004 0050.



Blackmoor Gate, Furzton, Milton Keynes

Approximate Gross Internal Area

51 Sq M/549 Sq Ft



Ground Floor

Please note that the location of doors, windows and other items are approximate and this floorplan is to be used for illustrative purposes only. Unauthorized reproduction is prohibited.

Energy Efficiency Rating		
	Current	Potential
Very energy efficient - lower running costs		
(92+) A		
(81-91) B		87
(69-80) C		
(55-68) D	64	
(39-54) E		
(21-38) F		
(1-20) G		
Not energy efficient - higher running costs		
England, Scotland & Wales		
EU Directive 2002/91/EC		



20-22 Bridge End, Leeds, LS1 4DJ
t: 0330 004 0050 e: hello@bettermove.co.uk
www.bettermove.co.uk

Please Note: These particulars, whilst believed to be accurate are set out as a general outline only for guidance and do not constitute any part of an offer or contract. Intending purchasers should not rely on them as statements of representations of fact, but must satisfy themselves by inspection or otherwise as to their accuracy. No person in this firm's employment has the authority to make or give any representation or warranty in respect of the property.