



Woodland Road
Derby
DE22 1GF

Offers in Excess of £360,000

bettermove

Woodland Road

Derby

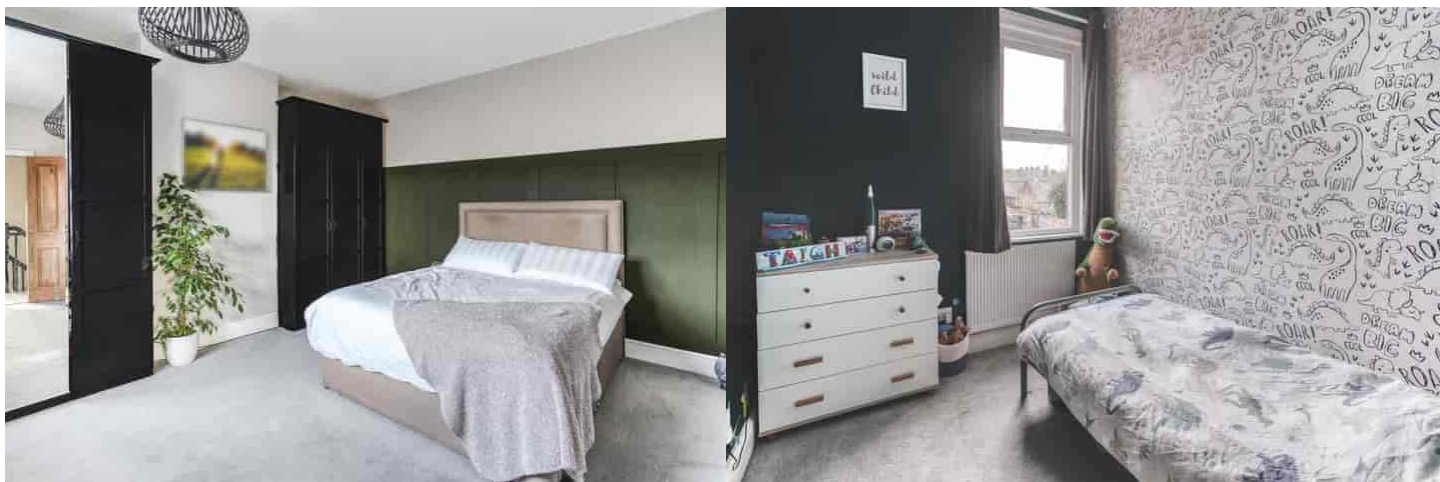
Bettermove are proud to present this 5 bedroom end of terrace house in Derby.

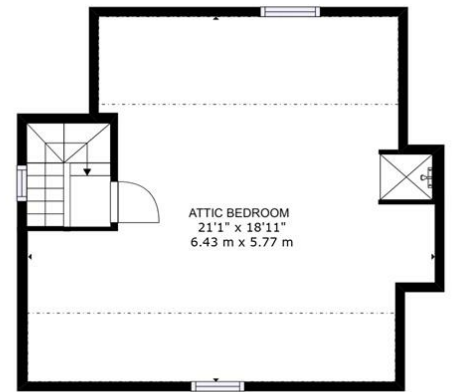
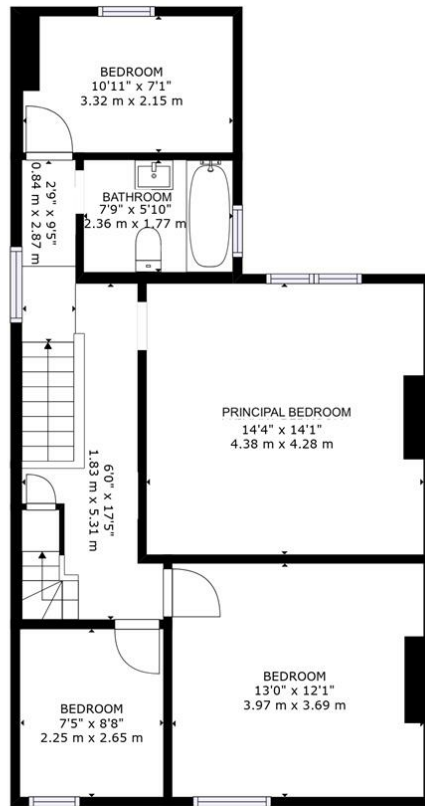
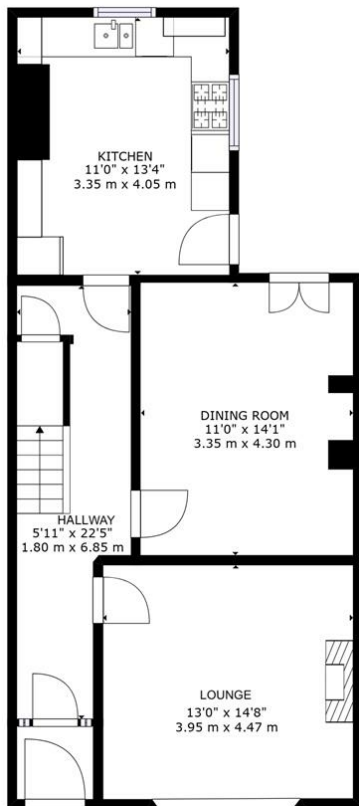
The property benefits from double glazing, gas central heating throughout and has on street parking, with access to a private rear parking area in the garden. The council tax band is C.

The interior of this beautifully presented property comprises a spacious living room, dining room and fitted kitchen on the ground floor. The first floor consists of 4 bedrooms and the family bathroom, with the fifth bedroom located on the second floor. The exterior boasts a private rear garden, perfect for enjoying the summer months.

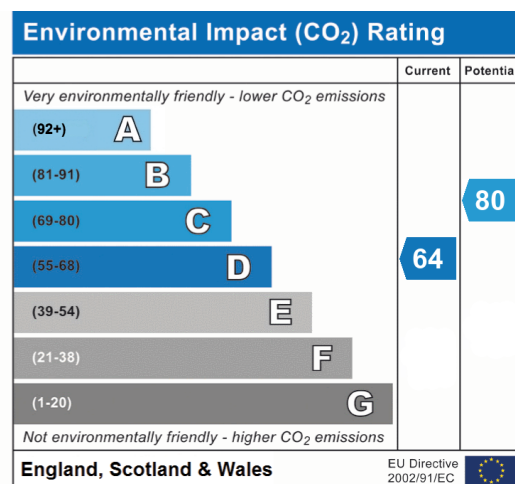
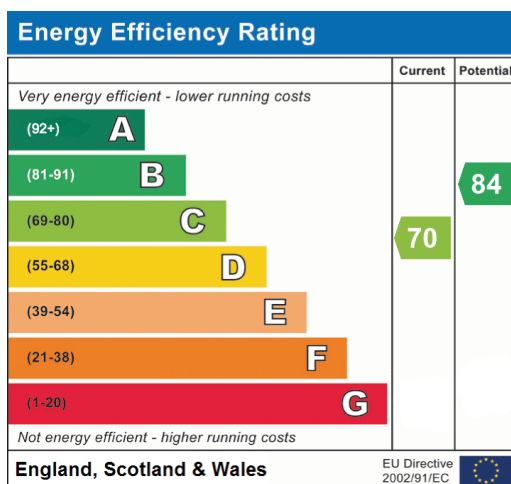
Located in the popular town of Derby, the property is close to a range of amenities, including shops, supermarkets, restaurants and pubs. Excellent transport connections can be found from Derby Train Station, as well as a wide range of bus routes and easy access to the A6, A38, A50, A52 leading onto the M1 Motorway and access to East Midlands Airport.

This exciting opportunity should not be missed! All enquiries can be made through Bettermove on 0330 004 0050.





GROSS INTERNAL AREA
FLOOR 1: 633 sq. ft, 59 m²; FLOOR 2: 707 sq. ft, 66 m²
FLOOR 3: 217 sq. ft, 20 m²; EXCLUDED AREAS:





20-22 Bridge End, Leeds, LS1 4DJ
t: 0330 004 0050 e: hello@bettermove.co.uk
www.bettermove.co.uk