



Back Turner Street
Manchester
M4 1FR

Offers in Excess of £375,000

bettermove

Back Turner Street Manchester

Bettermove are proud to present this 3 bedroom Terraced House in the heart of Manchester, available with no forward chain and welcoming cash buyers only.

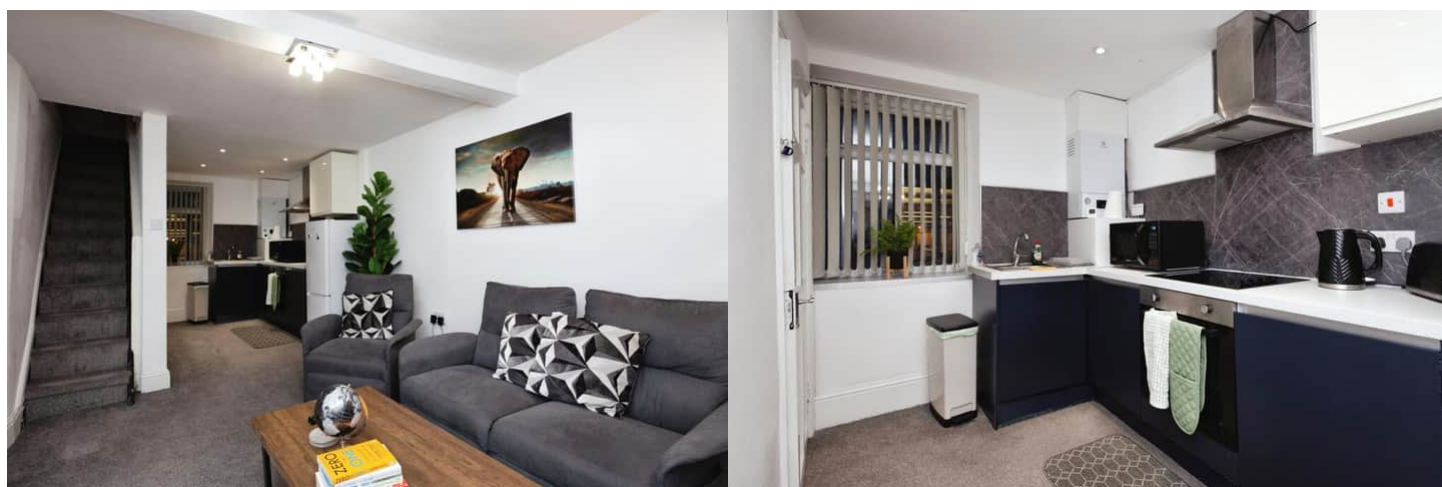
The property benefits from double glazing and gas central heating throughout. The council tax band is A.

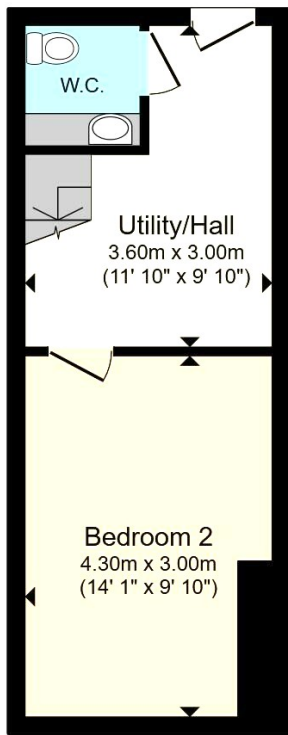
The property is tenanted and will be sold with tenants in situ for immediate investment - rental yields can be obtained through Bettermove.

The interior of this property comprises a spacious living room and the fitted kitchen on the ground floor. Access to the lower ground floor from the kitchen which hosts one double bedroom, utility area and a convenient WC. The first floor hosts one double bedroom and a shower room, with access to the second floor hosting one double bedroom with an ensuite bathroom.

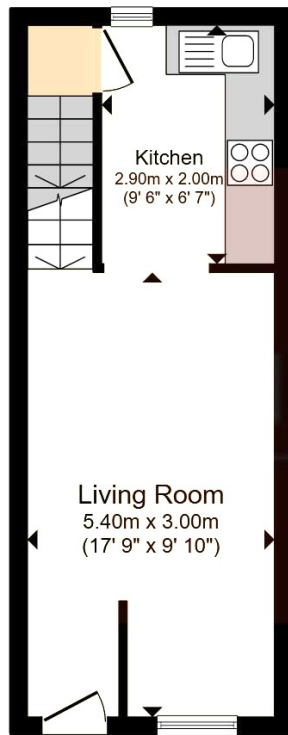
Located in the Heart of Manchester's Northern Quarter, the property is close to a range of amenities, including shops, supermarkets, restaurants and pubs. Excellent transport connections can be found from Manchester Victoria, Market Street & Shudehill Tram Stops and many local bus routes.

This exciting opportunity should not be missed! All enquiries can be made through Bettermove on 0330 004 0050.

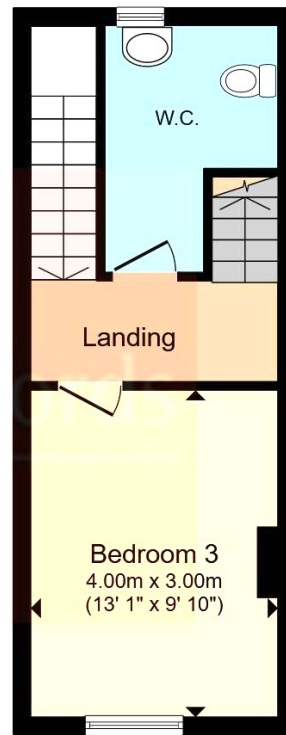




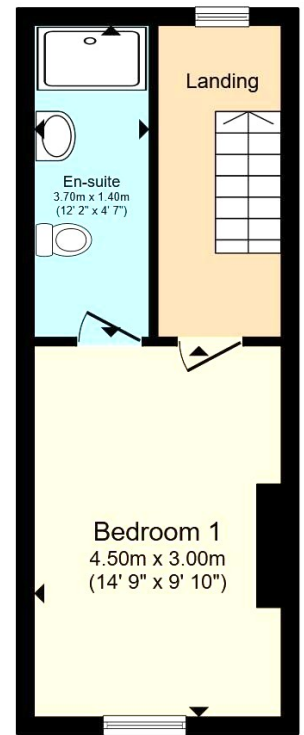
Cellar



Ground Floor

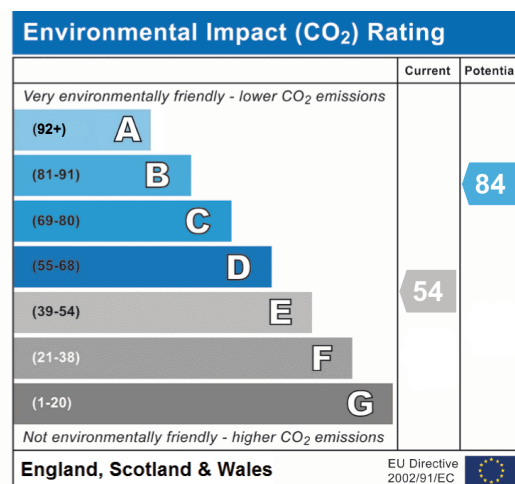
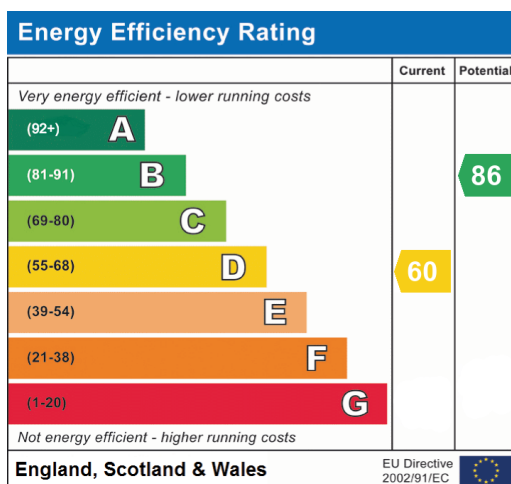


First Floor



Second Floor

Total floor area 100.8 sq.m. (1,085 sq.ft.) approx





20-22 Bridge End, Leeds, LS1 4DJ
t: 0330 004 0050 e: hello@bettermove.co.uk
www.bettermove.co.uk