



Beauvale Road
Hucknall
Nottingham
NG15 6PF

Offers in Excess of £160,000

bettermove

Beauvale Road Nottingham

Bettermove are proud to present this 3 bedroom End of Terrace House in the sought after area of Hucknall.

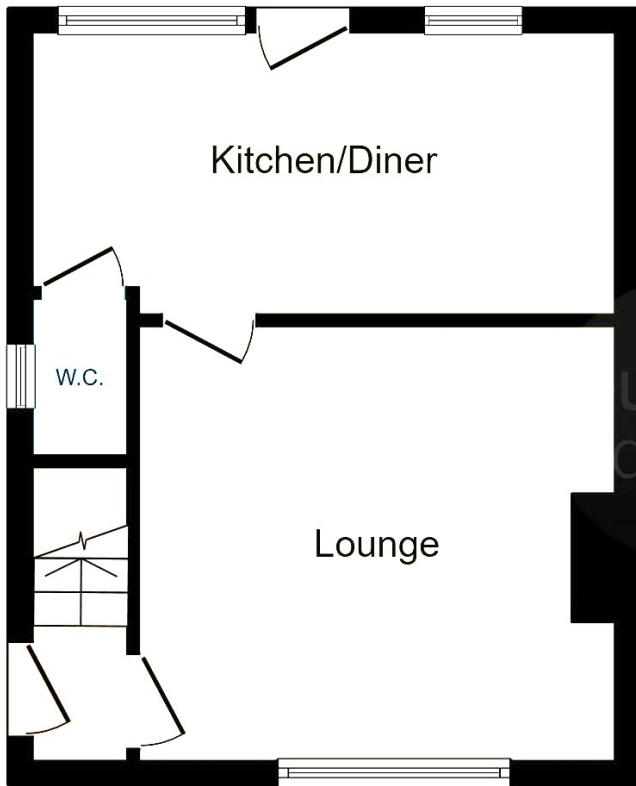
The property benefits from double glazing, gas central heating throughout and has off street parking available via the private driveway. The council tax band is A.

The interior of this property comprises a spacious living room and the fitted kitchen with a dining area and a convenient WC on the ground floor. The first floor consists of three bedrooms and the family bathroom. The exterior boasts a private rear garden, perfect for enjoying the summer months.

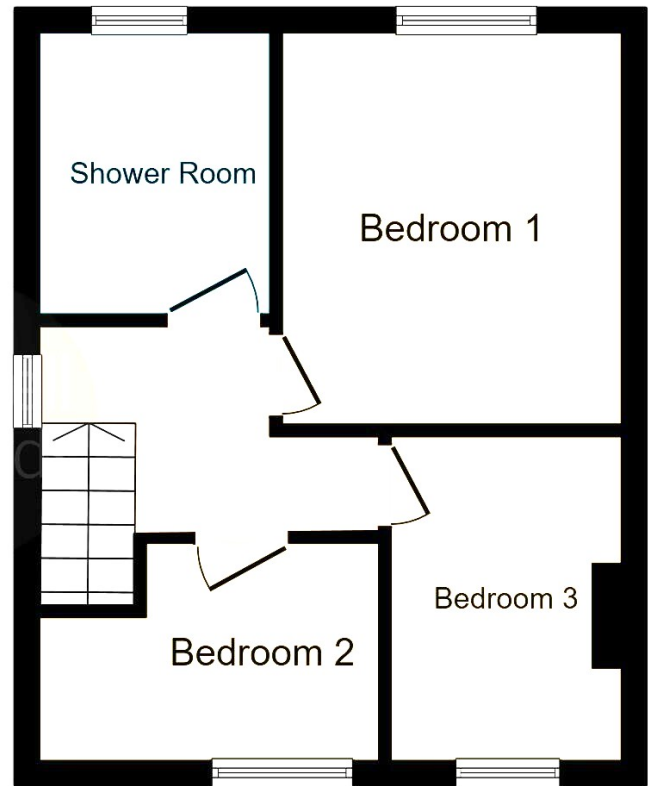
Located in the popular town of Hucknall, the property is close to a range of amenities, including shops, supermarkets, restaurants and pubs. Excellent transport connections can be found from the M1, Hucknall Train Station and many local bus routes.

This exciting opportunity should not be missed! All enquiries can be made through Bettermove on 0330 004 0050.






Ground Floor



First Floor

Energy Efficiency Rating		
	Current	Potential
Very energy efficient - lower running costs		
(92+) A		
(81-91) B		87
(69-80) C		
(55-68) D	64	
(39-54) E		
(21-38) F		
(1-20) G		
Not energy efficient - higher running costs		
England, Scotland & Wales		EU Directive 2002/91/EC 



20-22 Bridge End, Leeds, LS1 4DJ
t: 0330 004 0050 e: hello@bettermove.co.uk
www.bettermove.co.uk