



Shepherds Green Road
Shirley
Solihull
West Midlands
B90 4DY

Offers In Excess Of £225,000

bettermove

Shepherds Green Road Solihull

Bettermove are proud to present this 2 bedroom flat in Solihull available with no forward chain.

The property benefits from double glazing, gas central heating throughout and has off street parking available.

The council tax band is B.

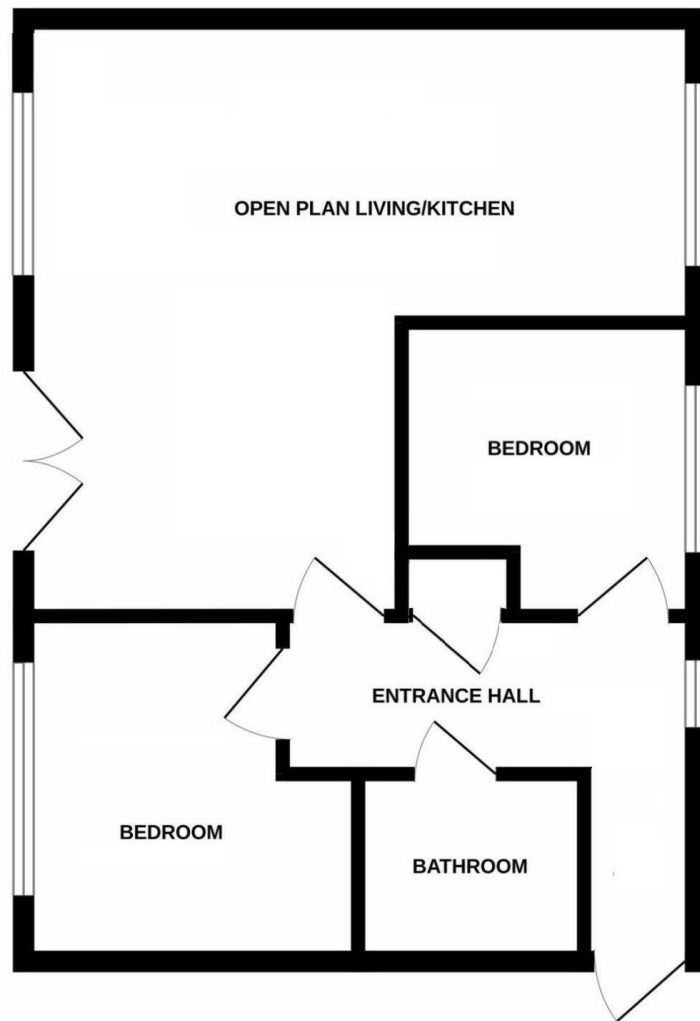
This is a leasehold property with 999 years on the lease from 2021; the service charge is approximately £1,500pa.


The interior of this beautifully presented property comprises a spacious living room, fitted kitchen, 2 bedrooms and the family bathroom.

Located in the popular town of Shirley, the property is close to a range of amenities, including shops, supermarkets, restaurants and pubs. Excellent transport connections can be found from the A34, M42 and many local bus routes.

This exciting opportunity should not be missed! All enquiries can be made through Bettermove on 0330 004 0050.





Energy Efficiency Rating		
	Current	Potential
Very energy efficient - lower running costs		
(92+) A		
(81-91) B	83	83
(69-80) C		
(55-68) D		
(39-54) E		
(21-38) F		
(1-20) G		
Not energy efficient - higher running costs		
England, Scotland & Wales	EU Directive 2002/91/EC 	



20-22 Bridge End, Leeds, LS1 4DJ
t: 0330 004 0050 e: hello@bettermove.co.uk
www.bettermove.co.uk