



Dorset Crescent
Consett
Durham
DH8 8HX

Offers in Excess of £85,000

bettermove 

Dorset Crescent Consett

Bettermove are proud to present this 2 bedroom Terraced House in Consett available with no forward chain.

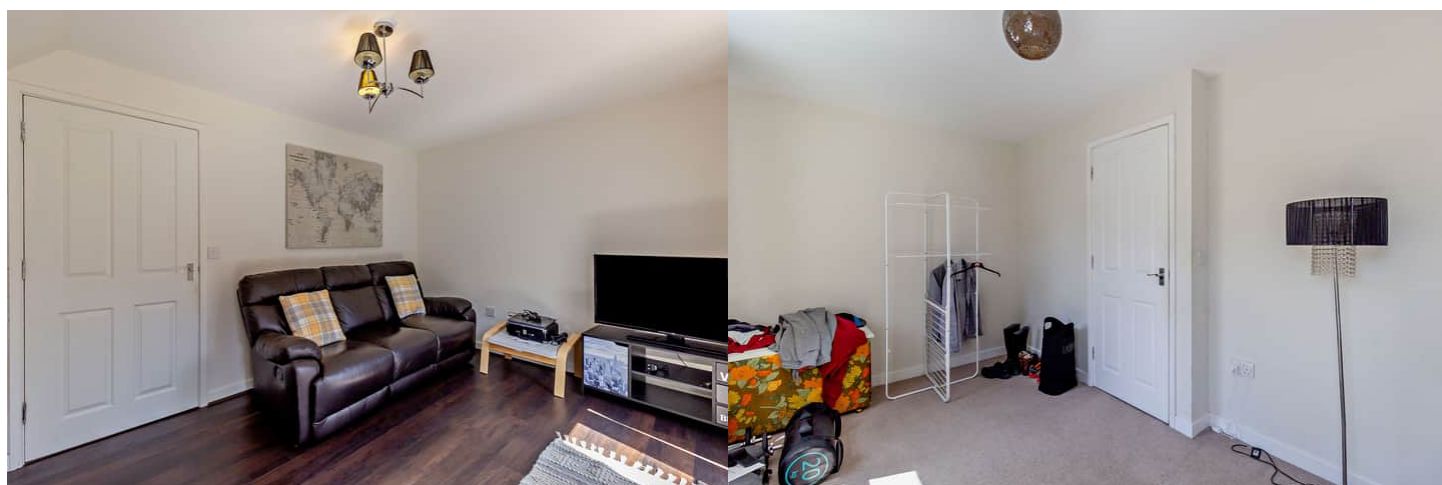
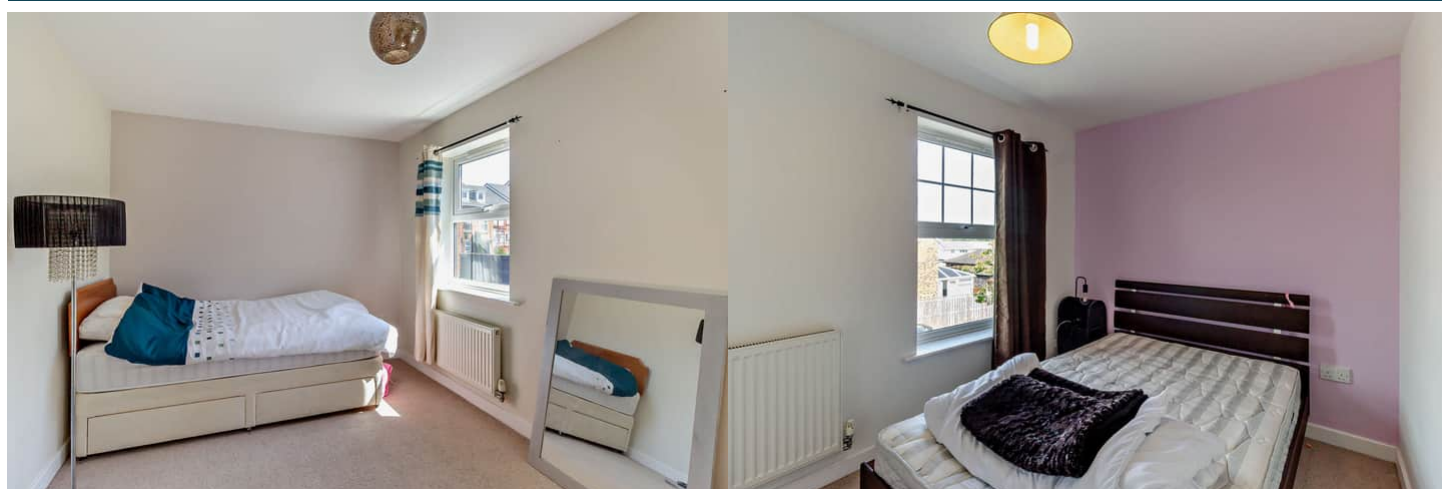
The property benefits from double glazing, gas central heating throughout and has off street parking available. The council tax band is A.

The property is tenanted and will be sold with tenants in situ for immediate investment - rental yields can be obtained through Bettermove.

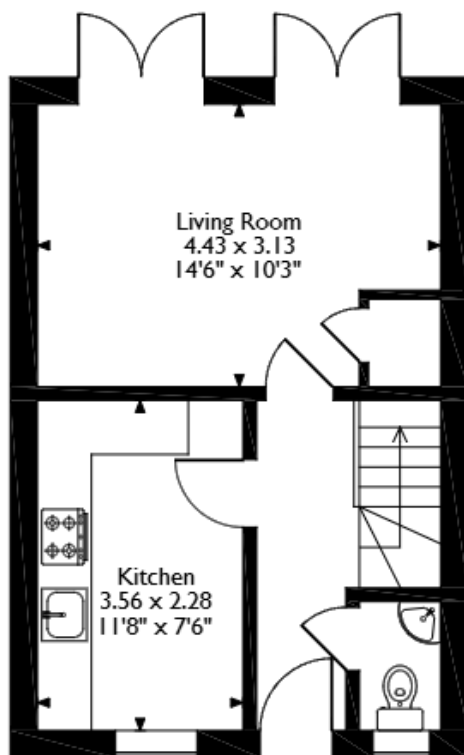
The interior of this property comprises a spacious living room, the fitted kitchen and a convenient WC on the ground floor. The first floor consists of two double bedrooms and the family bathroom. The exterior boasts a private rear garden, perfect for enjoying the summer months.

Located in the popular town of Consett, the property is close to a range of amenities, including shops, supermarkets, restaurants and pubs. Excellent transport connections can be found from the A692 and many local bus routes.

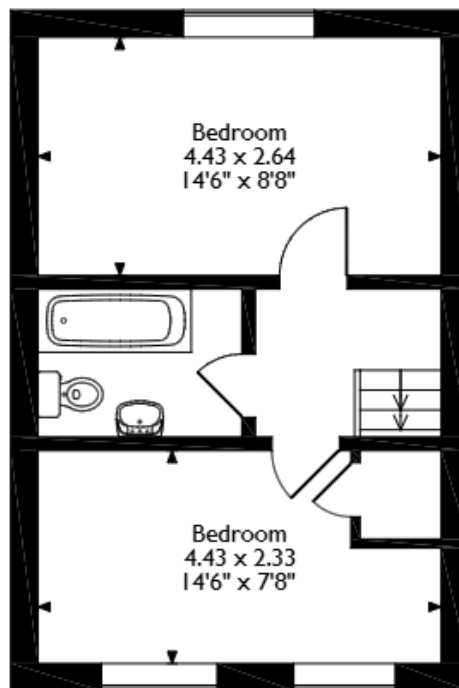
This exciting opportunity should not be missed! All enquiries can be made through Bettermove on 0330 004 0050.



Dorset Crescent, Consett,
Approximate Gross Internal Area
62 Sq M/668 Sq Ft




Ground Floor



First Floor

Please note that the location of doors, windows and other items are approximate and this floorplan is to be used for illustrative purposes only. Unauthorized reproduction is prohibited.

Energy Efficiency Rating		
	Current	Potential
Very energy efficient - lower running costs		
(92+) A		92
(81-91) B		
(69-80) C	77	
(55-68) D		
(39-54) E		
(21-38) F		
(1-20) G		
Not energy efficient - higher running costs		
England, Scotland & Wales	EU Directive 2002/91/EC 	



20-22 Bridge End, Leeds, LS1 4DJ
t: 0330 004 0050 e: hello@bettermove.co.uk
www.bettermove.co.uk

Please Note: These particulars, whilst believed to be accurate are set out as a general outline only for guidance and do not constitute any part of an offer or contract. Intending purchasers should not rely on them as statements of representations of fact, but must satisfy themselves by inspection or otherwise as to their accuracy. No person in this firm's employment has the authority to make or give any representation or warranty in respect of the property.