



Moot Close
Downton
Salisbury
Wiltshire
SP5 3JX

Offers In Excess Of £315,000

bettermove

Moot Close Salisbury

Bettermove are proud to present this 4 bedroom terraced house in Salisbury available with no forward chain.

The property is currently tenanted and it will be sold with tenants in situ for immediate investment. Rental yields can be obtained through Bettermove.

The property benefits from double glazing, gas central heating throughout and has off street parking available.

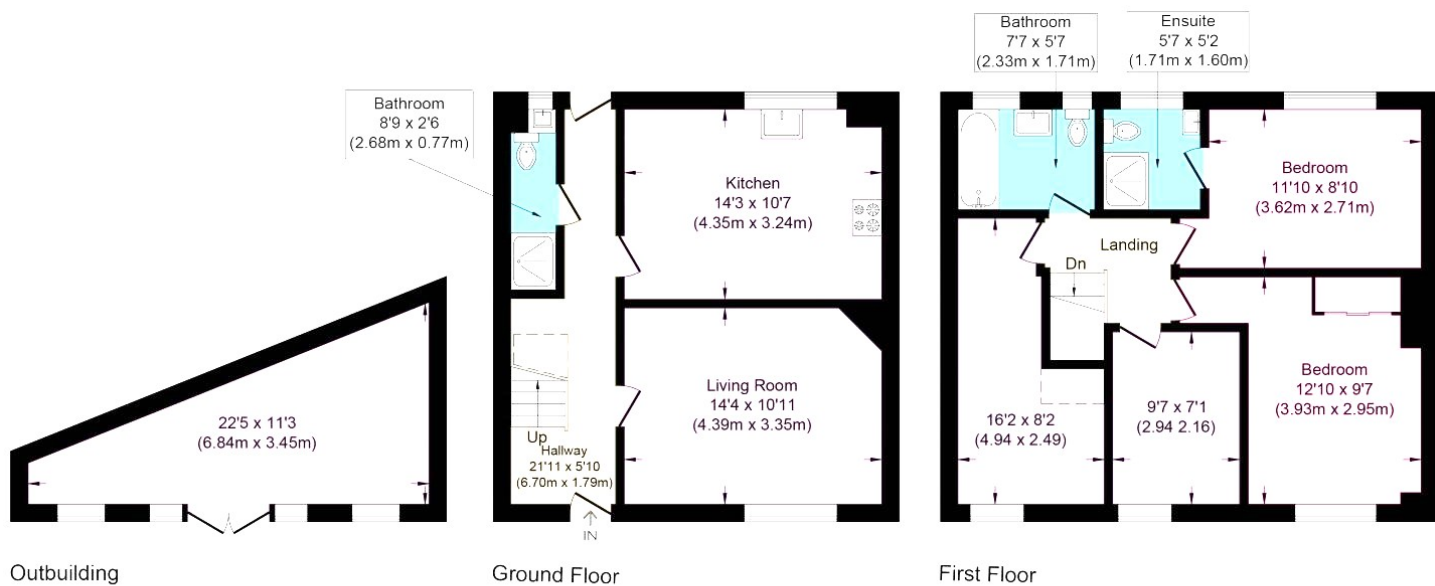
The council tax band is A.

The interior of this beautifully presented property comprises a spacious living room, w/c and fitted kitchen on the ground floor. The first floor consists of 4 bedrooms, en-suite and the family bathroom. The exterior boasts a private rear garden, perfect for enjoying the summer months.

Located in the popular village of Downton, the property is close to a range of amenities, including shops, supermarkets, restaurants and pubs. Excellent transport connections can be found from the A338 and local bus routes.

This exciting opportunity should not be missed! All enquiries can be made through Bettermove on 0330 004 0050.





37 Moot Close

Approximate Gross Internal Area = 88.98 sq m / 957.77 sq ft

Energy Efficiency Rating		
	Current	Potential
Very energy efficient - lower running costs		
(92+) A		
(81-91) B		87
(69-80) C	75	
(55-68) D		
(39-54) E		
(21-38) F		
(1-20) G		
Not energy efficient - higher running costs		
England, Scotland & Wales		EU Directive 2002/91/EC

20-22 Bridge End, Leeds, LS1 4DJ
t: 0330 004 0050 e: hello@bettermove.co.uk
www.bettermove.co.uk