



**2 Keystone House
South Meadow Road
Northampton
NN5 4RF**

Offers in Excess of £162,000

bettermove

South Meadow Road Northampton

Bettermove are proud to present this 2 bedroom Ground Floor Flat in Northampton available with no forward chain & welcoming cash buyers only.

The property benefits from double glazing, gas central heating throughout and has off road parking available via two allocated parking spaces. The council tax band is C.

This is a leasehold property with 106 years remaining on the lease; the ground rent is £250 per annum and the service charge is approximately £4,000 per annum.

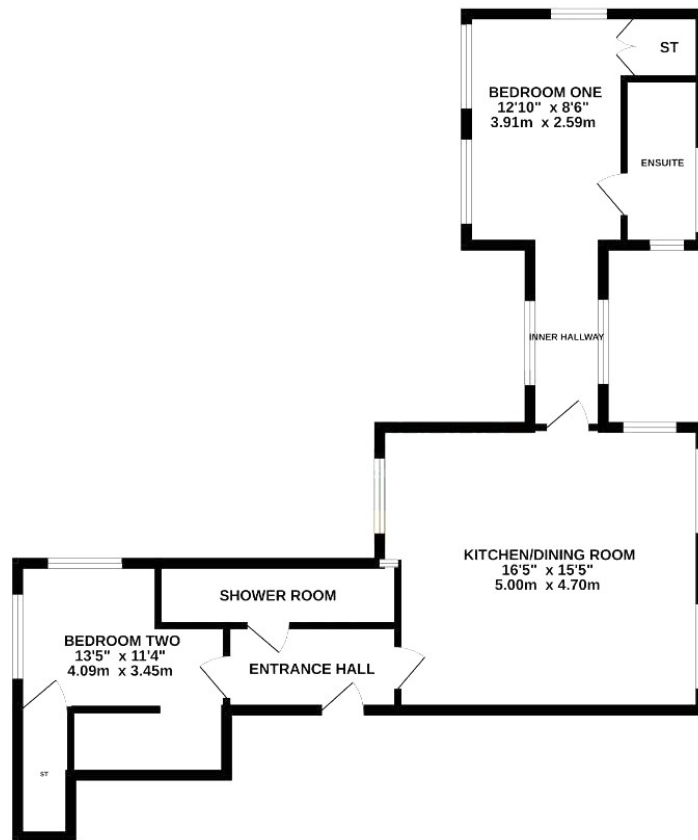
The interior of this well presented property comprises a spacious and open plan fitted kitchen and living area, two bedrooms including the master bedroom with an ensuite bathroom, family bathroom and ample storage space throughout on the ground floor of the building.

Located in the popular residential area of Northampton, the property is close to a range of amenities, including shops, supermarkets, restaurants and pubs. Excellent transport connections can be found from Northampton Train Station, the M1 and many local bus routes.


This exciting opportunity should not be missed! All enquiries can be made through Bettermove on 0330 004 0050.



GROUND FLOOR
656 sq.ft. (60.9 sq.m.) approx.



TOTAL FLOOR AREA - 656 sq.ft. (60.9 sq.m.) approx.

Energy Efficiency Rating		
	Current	Potential
Very energy efficient - lower running costs		
(92+) A		
(81-91) B		
(69-80) C		
(55-68) D	67	73
(39-54) E		
(21-38) F		
(1-20) G		
Not energy efficient - higher running costs		
England, Scotland & Wales <small>EU Directive 2002/91/EC</small> 		



20-22 Bridge End, Leeds, LS1 4DJ
t: 0330 004 0050 e: hello@bettermove.co.uk
www.bettermove.co.uk