



Long Leaves
Stevenage
Hertfordshire
SG2 9AX

Offers In Excess Of £350,000

bettermove

Long Leaves

Stevenage

Bettermove are proud to present this impressive 3 bedroom terraced house in the sought after area of Stevenage.

The property benefits from double glazing, gas central heating throughout. The council tax band is C.

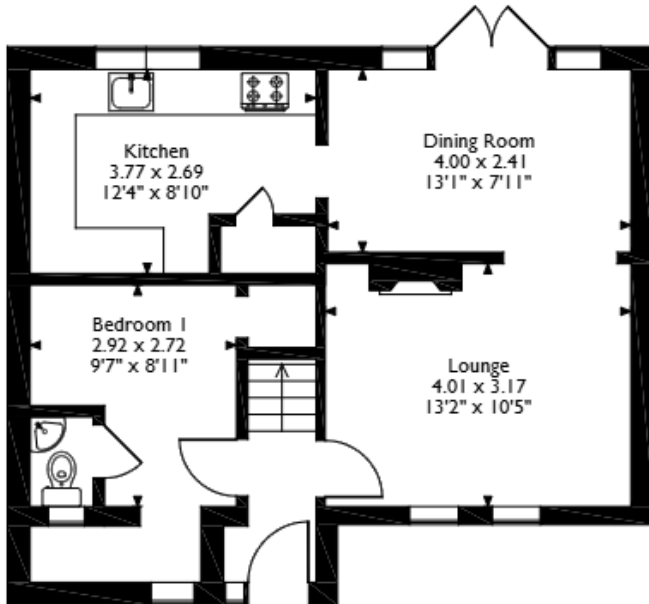
The interior of this beautifully presented property comprises a spacious living room, dining room, study, w/c and fitted kitchen on the ground floor. The first floor consists of 3 bedrooms and the family bathroom. The exterior boasts a private rear garden, perfect for enjoying the summer months.

Located in the popular town of Stevenage, the property is close to a range of amenities, including shops, supermarkets, restaurants and pubs. Excellent transport connections can be found from the A602, A1(M) and many local bus routes.

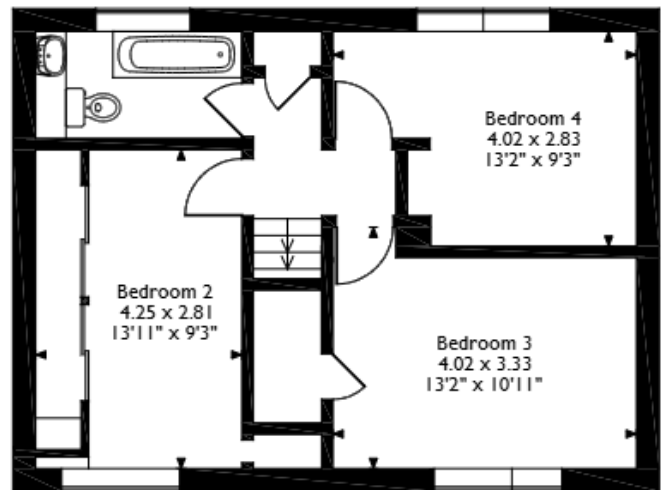
This exciting opportunity should not be missed! All enquiries can be made through Bettermove on 0330 004 0050.



Long Leaves, Stevenage, Hertfordshire
Approximate Gross Internal Area
95 Sq M/1022 Sq Ft

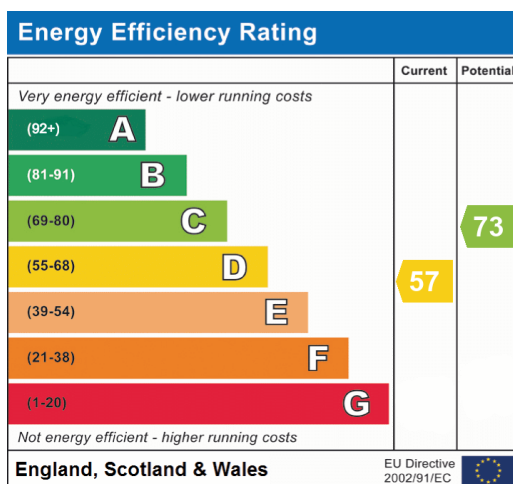


Ground Floor



First Floor

Please note that the location of doors, windows and other items are approximate and this floorplan is to be used for illustrative purposes only. Unauthorized reproduction is prohibited.





20-22 Bridge End, Leeds, LS1 4DJ
t: 0330 004 0050 e: hello@bettermove.co.uk
www.bettermove.co.uk