



**The Lanes  
Bolehill  
Matlock  
Derbyshire  
DE4 4GJ**

**Offers In Excess Of £230,000**

**bettermove**



# The Lanes Matlock

Situated in the charming town of Matlock, this terraced house on The Lanes is an excellent option for those looking to step onto the property ladder without breaking the bank. With two bedrooms and a single bathroom, the layout is straightforward and functional, providing a comfortable space to call home. The property's affordable price makes it an attractive prospect for first-time buyers or investors aiming to expand their portfolio.

Matlock offers a picturesque setting with a selection of local amenities and transport links, making it convenient for daily commuting or leisurely exploration of the surrounding Derbyshire countryside. The town is known for its vibrant community and access to outdoor activities, ensuring a balanced lifestyle for residents. Nearby schools provide options for families considering the area.

The Lanes presents an opportunity to invest in a property with potential for personalisation and improvement, allowing new owners to truly make it their own. Whether you're looking to settle down or seek a promising investment, this terraced house offers a blend of affordability and location. Act now to secure your interest in this property—contact us today!

---

You can secure the purchase immediately by paying an exclusivity deposit of £1,000.

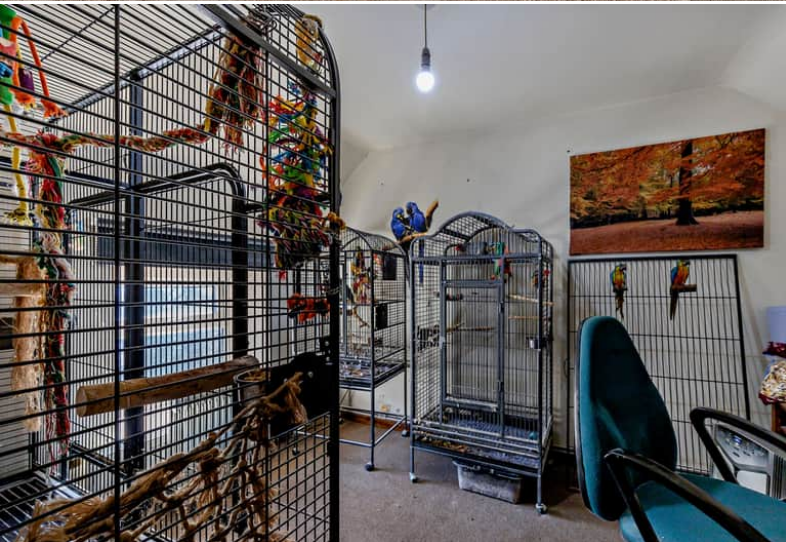
This is not an additional fee and is returned to you on completion.

Paying this deposit ensures that the seller takes the property off the market and reserves it exclusively for you. Therefore, eliminating the risk of being gazumped by another buyer, and incurring aborted costs.









20-22 Bridge End, Leeds, LS1 4DJ  
t: 0330 004 0050 e: hello@bettermove.co.uk  
[www.bettermove.co.uk](http://www.bettermove.co.uk)