



Oak End Way
Woodham
Addlestone
Surrey
KT15 3DT

£1,750,000

bettermove

Oak End Way

Addlestone

Bettermove are proud to present this luxury 5 Bedroom Detached House in Woodham, available with no forward chain.

The property benefits from double glazing, air source heat pump, solar panels and has ample off street parking available via the electric gated driveway and the garage. The council tax band is H.

The interior of this beautifully presented property comprises a spacious living room, dining room, office room, open plan fitted kitchen with access to the garden, utility area and a convenient WC on the ground floor. The first floor consists of three bedrooms with ensuite bathrooms in each, including the impressive master bedroom with a walk in wardrobe. The second floor consists of two further bedrooms with ensuite bathrooms and a large storage cupboard. The exterior of the property boasts a private well maintained rear garden, perfect for enjoying the summer months.

Located in the sought after private residential area of Woodham, the property is just a short walk away from a range of amenities, including shops, supermarkets, restaurants and schools. Excellent transport connections can be found from West Byfleet Train Station, the M25 and many local bus routes.

This exciting opportunity should not be missed! All enquiries can be made through Bettermove on 0330 004 0050.

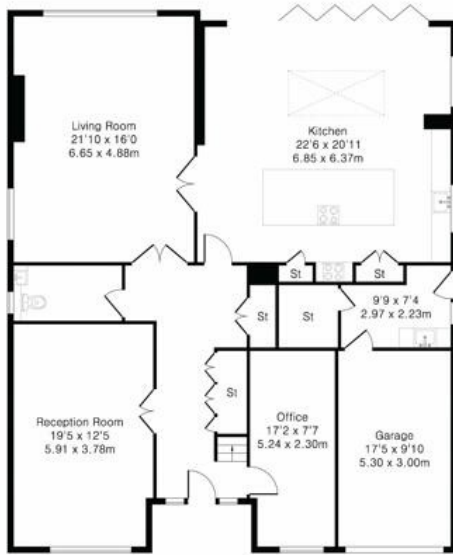


Approximate Gross Internal Area 3696 sq ft - 343 sq m

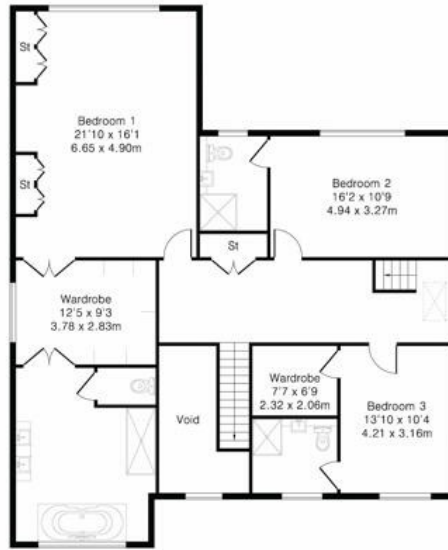
Ground Floor Area 1760 sq ft – 163 sq m

First Floor Area 1368 sq ft – 127 sq m

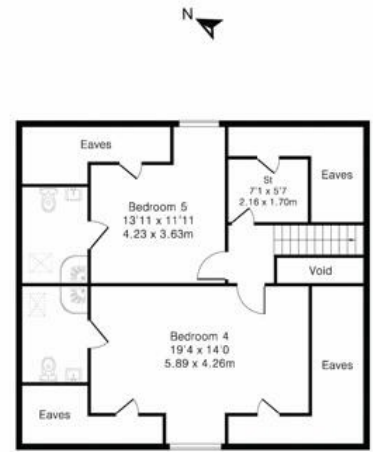
Second Floor Area 568 sq ft – 53 sq m



Ground Floor



First Floor



Second Floor

Energy Efficiency Rating		
	Current	Potential
Very energy efficient - lower running costs		
(92+) A		
(81-91) B		
(69-80) C	79	83
(55-68) D		
(39-54) E		
(21-38) F		
(1-20) G		
Not energy efficient - higher running costs		
England, Scotland & Wales		
	EU Directive 2002/91/EC	



20-22 Bridge End, Leeds, LS1 4DJ
t: 0330 004 0050 e: hello@bettermove.co.uk
www.bettermove.co.uk