



**Victor Street  
Grimsby  
Lincolnshire  
DN32 7QW**

**Offers In Excess Of £72,000**

**bettermove**

# Victor Street Grimsby

Bettermove are proud to present this 2 bedroom terraced house in Grimsby available with no forward chain.

The property benefits from double glazing, gas central heating throughout.

The council tax band is A.

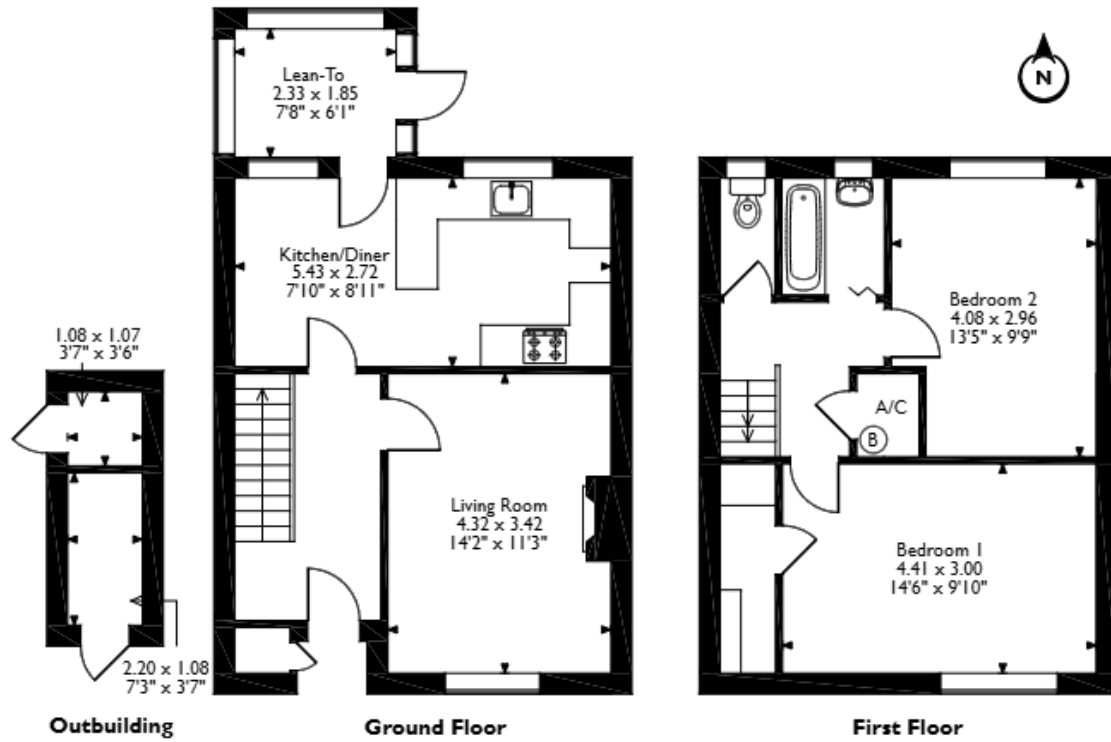
The interior of this property requires modernisation to bring out its potential and comprises a spacious living room, lean to and fitted kitchen diner on the ground floor. The first floor consists of 2 bedrooms and the family bathroom. The exterior boasts a private rear garden, perfect for enjoying the summer months.

Located in the popular town of Grimsby, the property is close to a range of amenities, including shops, supermarkets, restaurants and pubs. Excellent transport connections can be found from the A180, A16 and many local bus routes.

This exciting opportunity should not be missed! All enquiries can be made through Bettermove on 0330 004 0050.



Victor Street, Grimsby  
Approximate Gross Internal Area  
Main House = 76 Sq M/818 Sq Ft  
Outbuilding = 5 Sq M/54 Sq Ft  
Total = 81 Sq M/872 Sq Ft



Please note that the location of doors, windows and other items are approximate and this floorplan is to be used for illustrative purposes only. Unauthorized reproduction is prohibited.



20-22 Bridge End, Leeds, LS1 4DJ  
 t: 0330 004 0050 e: [hello@bettermove.co.uk](mailto:hello@bettermove.co.uk)  
[www.bettermove.co.uk](http://www.bettermove.co.uk)

Please Note: These particulars, whilst believed to be accurate are set out as a general outline only for guidance and do not constitute any part of an offer or contract. Intending purchasers should not rely on them as statements of representations of fact, but must satisfy themselves by inspection or otherwise as to their accuracy. No person in this firm's employment has the authority to make or give any representation or warranty in respect of the property.